



MONTHLY MEMBERSHIP PROGRESS REPORT

District 5M 6

Results as of: 05/31/2018

GMT: MICHAEL MOLEND

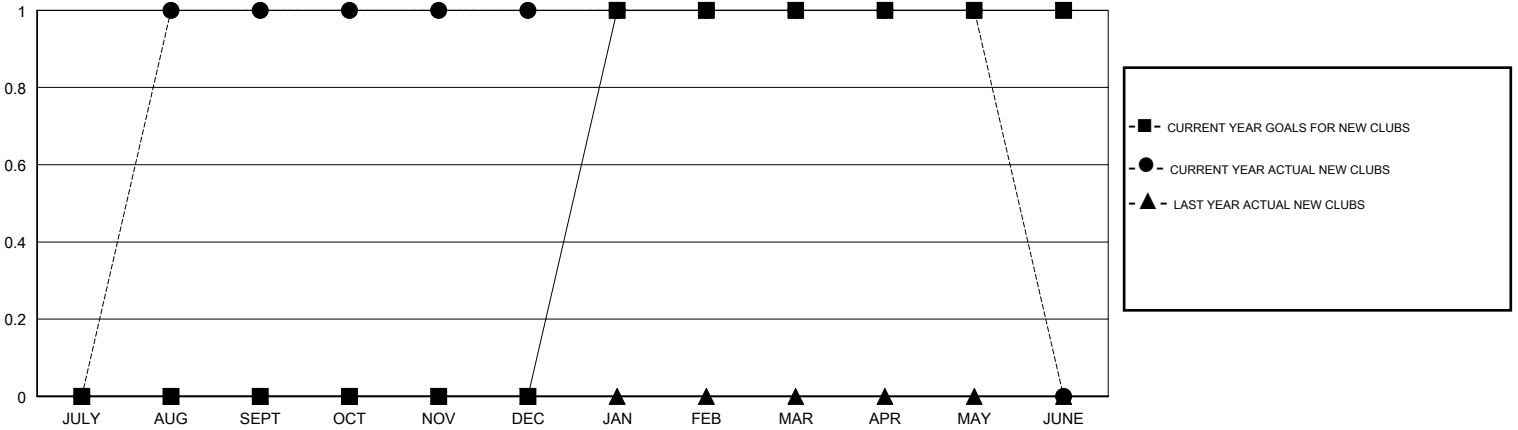
LOCATION MINNESOTA

GMT CA

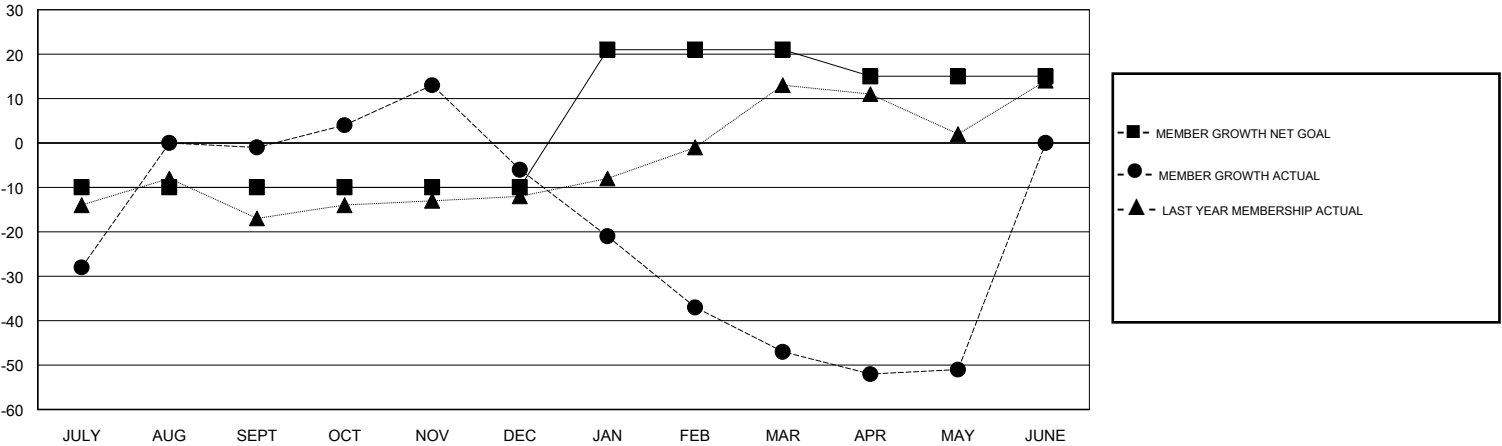
Clubs			
RESULTS FOR 2017-2018			
QUARTER	NEW CLUB GOAL	NEW CLUBS	DROPPED CLUBS
JULY/AUG/SEPT	0	1	0
OCT/NOV/DEC	0	0	0
JAN/FEB/MAR	1	0	0
APR/MAY/JUNE	0	0	0

Members			
RESULTS FOR 2017-2018			
QUARTER	MEMBER GROWTH NET GOAL	MEMBER GROWTH ACTUAL	DROPPED MEMBERS ACTUAL (including transfers)
JULY/AUG/SEPT	-10	58	55
OCT/NOV/DEC	0	50	48
JAN/FEB/MAR	31	19	58
APR/MAY/JUNE	-6	20	22

GOALS AND ACTUAL NEW CLUBS CUMULATIVE



GOALS AND ACTUAL MEMBERS CUMULATIVE



DROPPED CLUBS: 0	26 CLUBS OF 38 ADDED 1 OR MORE NEW MEMBERS	<u>GENDER DISTRIBUTION</u>
DROPPED MEMBERS	CLICK HERE FOR CUMULATIVE MEMBERSHIP DATA	MALE 979 (68.37%)
DECEASED 22		FEMALE 453 (31.63%)
CLUB CANCELLED 0	TOTAL FAMILY UNIT MEMBERS 320	Women Percentage Fiscal Year Goal: 31%
OTHER 160	FAMILY MEMBERS PAYING HALF DUES 160	
TOTAL 182		